

## Central Plants

Harris County Thermal Energy Plant  
Houston, Texas

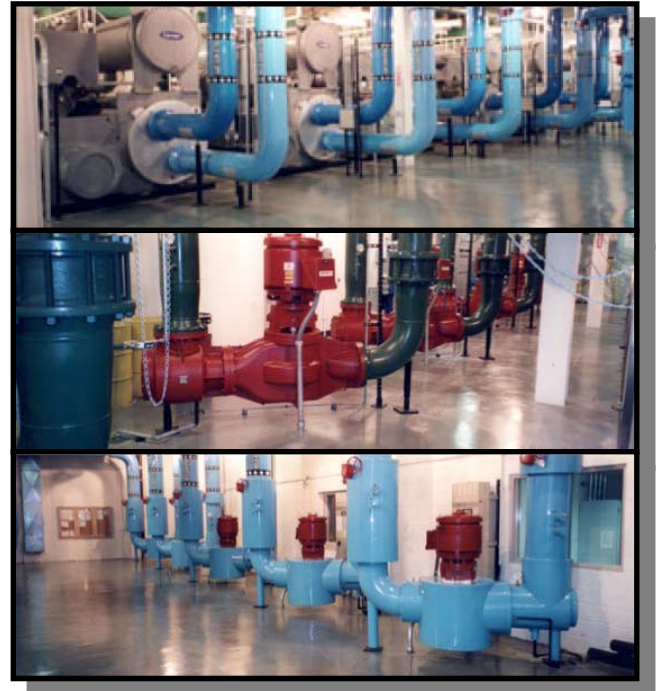
**To provide cooling and heating for new downtown** County buildings and replace aging plant equipment in existing buildings, Harris County elected to build a new central thermal energy plant. AHP personnel provided master planning, program management and engineer-of-record services.

AHP personnel provided procurement of the services of a team to design, build, and operate the central plant and distribution system. AHP structured a two-step process to solicit statements of qualifications and pricing from a slate of qualified candidates. Services included RFQ and RFP preparation, evaluation of

qualifications and life cycle costs, establishment of design standards, recommendation for contract awards, contract negotiations, legal and financial assistance in setting up a non-profit corporation and issuing bonds, design and construction oversight, utility negotiations, and observation of startup and performance testing.

The facility includes 7,400 tons of chilling capacity, 120 BHP of steam boilers and plant auxiliaries contained in a new plant building; chilled water and steam distribution piping in existing tunnels; variable speed pumps and new control valves in existing buildings; and instrumentation, controls, and monitoring system.

Harris County's downtown central cooling and heating plant saves the taxpayers over \$1,200,000 a year compared to replacement of equipment in the individual building plants because of lower capital costs, more efficient equipment, and smaller operating staff.



### Completion Date

March 2004

### Construction Cost

\$20,000,000

### Project Delivery Method

Program Management, Design-Build